

2024/25
A-levels



COLEG Sir Benfro
Pembrokeshire COLLEGE

ThinkMore.**Learn**More.**Be**More.



WELCOME TO COLLEGE



We can't wait for you to **join us!**

THE WORLD IS YOUR OYSTER



Whatever you want to be, at Pembrokeshire College our aim is to ensure that you receive an exceptional learning experience.

With industry standard facilities, and teaching staff with real industry experience, we are dedicated to unlocking your potential and equipping you with the skills and experience you will need to progress to further study or into employment.

Once you have made the decision to join Pembrokeshire College you will be treated like an adult. We will provide you with the best possible teaching, care, support and guidance to help you along the way and enable you to fulfil your ambitions. In return, we expect you to strive for 100% attendance, to commit to your course and to take full advantage all the opportunities presented to you.

I look forward to welcoming you to Pembrokeshire College.



Dr Barry Walters
Principal

MAE'R LLYFRYN HWN AR GAEL YN GYMRAEG | THIS BOOKLET IS AVAILABLE IN WELSH.

26 A-level subjects

Biology | Business Studies | Chemistry | Computer Science
Drama & Theatre Studies | Economics | English Language & Literature
English Literature | Fine Art | French | Further Mathematics | Geography
Government & Politics | History | Law | Mathematics | Media Studies
Music | Philosophy, Ethics, Beliefs & Values | Photography
Physical Education | Physics | Psychology | Sociology | Spanish
Welsh - Second Language | Advanced Skills Baccalaureate Wales

Our A-level results are among the best in the county, we perform in line with the National Comparators.

Pembrokeshire College: A* 14%
National Comparator: A* 13.5%



“

“There are no secrets to success. It is the result of preparation, hard work and learning from failure.”

Colin Powell



Flying High University Destinations

Pembrokeshire College has established a strong reputation for preparing students for entry to universities both in the UK and overseas.

We specialise in preparing students for their university interviews and equipping them with the knowledge to follow their chosen degree pathway.

We have extensive experience in helping learners to gain acceptance onto the following disciplines:

- + Medicine
- + Dentistry
- + Veterinary Science
- + Midwifery
- + Engineering
- + Economics
- + Finance
- + Optometry
- + Business
- + Maths
- + Law

University destinations over the past three years include:

- + University of Oxford
- + University of Cambridge
- + University of Bristol
- + University of Leeds
- + University of Liverpool
- + University of Exeter
- + Cardiff University
- + University of Bath





Madeleine Draycott
University of Cambridge
A-level Economics – A
*A-level Maths – A**
*A-level Psychology – A**
Welsh Baccalaureate – A



Joseph Jenkins
University of Bath
*A-level Further Maths – A**
*A-level Physics – A**
*A-level Computer Science – A**
*A-level Spanish – A**
*Completed when in Year 11 – A-level Maths – A**



Timali Jayathilaka
Cardiff University
*A-level Maths – A**
*A-level Biology – A**
*A-level Chemistry – A**
AS Level Physics – A



Jay Coombe
University of Bristol
A-level Biology – A
A-level Chemistry – A
A-level PE – A
Welsh Baccalaureate – B

Enrichment –

We offer our learners a range of enrichment opportunities which run alongside the academic timetable. These activities are supported by visiting experts, staff and volunteers and is open to ALL College learners.

There are also enrichment opportunities such as crafts and games most days in the Atrium.

Participating in enrichment activities will support not only your mental health and wellbeing, but will also help you to make new friends, and provide you with opportunities to learn new skills and most importantly have fun.

Enrichment clubs and societies include:

- Sports Academies and Fitness Activities
- Arts and Crafts
- Pride Group
- Debate Club
- Board and Card Games
- Mental Health Support Groups
- Dungeons & Dragons
- Clwb Cymraeg
- Duke of Edinburgh
- Gaming Group
- Safe Space
- Peripatetic Music Lessons
- County Orchestra



Get Involved



MEET YOUR SUPPORT TEAM



EMMA LIPPIETT
Head of Faculty



MICHELLE GRIFFITHS
Curriculum Area Manager



SARA HANNON
Faculty Co-ordinator



REECE MORRIS
Faculty Administrator



LYN WARD
Learning Coach



“Anything is possible when you have the right people there to support you.”

Misty Copeland

OUR SUPPORT SERVICES

SUPPORTING YOU:



LIZ DEVONALD
Pastoral Coach



WENDY STEWART
Pastoral Coach



LAURA RICHARDS
Pastoral Coach



CLARE EVANS
Pastoral Coach

KEEPING YOU ON TRACK:

100% Attendance
AS & A2 Seminars
Online Learner Profile
Personal Tutorials
Target Setting

SUPPORT THROUGHOUT YOUR COLLEGE JOURNEY

TRANSITION

At Pembrokeshire College we provide an inclusive learning environment offering support for all learners to ensure a safe and positive environment for all.

ADVICE AND GUIDANCE

If you're unsure as to what you would like to do, our admissions team are always on hand with impartial advice and guidance to help you choose the right course. If you have any questions please email: admissions@pembrokeshire.ac.uk

COMMUNICATION

EVERY LEARNER HAS A PASTORAL SUPPORT COACH

Pastoral Coaches are assigned to learners and all learners receive tutorial support each week. The tutorial programme ensures all learners receive a consistent and appropriate level of support, advice and guidance. This is on both a group and an individual basis.

MONITORING YOUR PROGRESS

The progress of learners is monitored through the online Learner Profile which allows monitoring and follow-up in 'real time'. Parents and guardians can have access to this information with the permission of the learner.

TARGET SETTING

Learners are set learning targets through individual tutorials, learning agreements and action plans. All targets are recorded on the Learner Profile and are monitored through the tutorial process. Additional support is provided by Learning Coaches for the achievement of targets.

WE EXPECT 100% ATTENDANCE

All students agree to 100% attendance and a Code of Conduct at the outset of their course which leads to a sense of shared responsibility. A strong but supportive Positive Behaviour/ Disciplinary Policy is in place and there is a dedicated resource to work with any student who is at risk of disengagement.

REACH YOUR GOALS



SKILLS

Whether you are looking to go straight into employment, or progress to higher level study, English and Maths are viewed by employers and universities as critical skills to have.

Whatever your programme of study, our lecturers and learning support staff are committed to helping you to improve your reading, writing, communication and mathematics skills so you leave College with the skills you'll need to progress.

Maths and English are core to all learning programmes at Pembrokeshire College. If you haven't already achieved a grade C or above in English Language and/or Mathematics we will automatically enrol you onto English and/or Mathematics classes as part of your programme.

WELSH

All College students are encouraged to have an appreciation of Welsh language and culture. Students who have previously completed any learning through the medium of Welsh will be encouraged and supported to maintain and develop those skills. All students can access tutorials, Advanced Skills Baccalaureate Wales and aspects of their course through the medium of Welsh if they wish to do so.

AN INCLUSIVE ENVIRONMENT

The College is committed to providing an inclusive education for all students with additional needs and/or disabilities. We also have strong links with specialist provider schools, employers, charities and other specialist organisations to make your transition to College as smooth as possible. Amongst other things, we are able to support with: Assistive Technology | Autism | Dyslexia | Learning Difficulties and Physical Disabilities | Sensory Impairments | General Wellbeing.

LEAD THE WAY

MORE ABLE & TALENTED (MAT)

All A-level students receive UCAS (University & Colleges Application Service) support. There is also targeted support via our MAT programme for high achievers and a MAT panel of senior academics has been selected to help students develop areas of excellence through specialist guidance and mentoring.

Pembrokeshire College is a member of a network of partnership hubs called Seren. Seren was created to enable schools and colleges to share resources with a means to preparing more Welsh students for universities like Oxford and Cambridge. Students can benefit from:

- » Mentoring by external specialists
- » Mock interviews with an Oxbridge consultant
- » MAT bursaries
- » Attendance at Vet Med and Medlink conferences
- » Seren network activities
- » An event for Russell Group and Oxbridge applicants
- » Aspirational target setting
- » Access to MIT Global Teaching Lab sessions

MAKE A DIFFERENCE

At College we encourage learners to get involved with how the College operates and to be involved in decision making. The following roles give our learners the opportunity to really make a difference:

- » Stand for Student Governor
- » Become a Learner Voice Representative
- » Become a Coleg Cymraeg Welsh Ambassador
- » Sign up to be a Student Ambassador
- » Become a Safeguardian (this can help to maintain links to your previous school)
- » Apply to be part of our Learner Executive

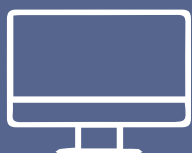


“

“New facilities are about
new beginnings and
endless possibilities.”

Bob Etheridge

As a Pembrokeshire College learner you'll have access to a whole host of amazing facilities and resources. From state-of-the-art classrooms and laboratories to a fully equipped gym, and plenty of spaces to eat and relax.



IT/MAC SUITES



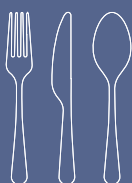
SCIENCE LABS



STUDY AREAS

STUDY

ENJOY



GRAB BREAKFAST
IN OUR REFECTORY



STARBUCKS



LUNCH IN THE
RESTAURANT



ACCESS SUPPORT IN
THE HWB



EMPLOYMENT &
ENTERPRISE BUREAU



GYM AND SPORTS
HALL

SELF-CARE

PAMPER



HAIR SALONS



BEAUTY SALONS



WATCH A SHOW IN
OUR MERLIN
THEATRE

GETTING STARTED

At Pembrokeshire College we employ teaching staff who have specialist academic post-16 qualifications and real industry expertise. This combination ensures that you receive high quality teaching that is both engaging and stimulating, guaranteeing you the best possible start at advanced level.

CHOOSE YOUR ROUTE

A-level learners take one of the following routes in Year One

Route 1

- » 3 A-level subjects and the Advanced Skills Baccalaureate Wales (ASBW)






Route 2 (for Seren learners with 6 A* grades at GCSES only*)

- » 4 A-level subjects with the option of also completing an Extended Project Qualification (EPQ)
*subject to change based on the national Seren criteria

VESPA: A-LEVEL MINDSET

Learners will attend tutorials and seminars based on the A-level Mindset. This will help learners to identify the skills required for successful A-level study.

Learners who demonstrate the five elements of VESPA are more successful:

VISION	You know what you want to achieve	
EFFORT	You put in many hours of proactive independent study	
SYSTEMS	You organise your learning resources and your time	
PRACTICE	You develop your skills through consistent practice	
ATTITUDE	You respond constructively to setbacks	



STEP 1 - OPEN EVENING

Attend one of our Open Evenings where you can take a tour of our facilities and speak directly to our lecturers and support teams. You can also find information on all our courses on our website: pembrokeshire.ac.uk

If you are unsure of which course is right for you, our friendly Advice and Guidance Team are always on hand as well as Careers Wales.

Check out our website for details of upcoming Open Evenings.

STEP 2 - APPLICATION

Apply via our website - search for your course then apply online. You'll need to create an account which will allow you to track your application.

If you need some help completing your application, please make an appointment to see our Admissions team on: 0800 9 776 788.

STEP 3 - 1:1 GUIDANCE

Once we have received your application you will be invited to attend one of our guidance events where subject lecturers will give you more information on the course.

Finally, you will be asked to complete your enrolment in August where we will check your GCSE results and enrol you onto your course.



“

“You don’t take a
photograph, you make it.”

Ansel Adams

FINE ART, DRAMA & THEATRE STUDIES, MEDIA STUDIES, MUSIC & PHOTOGRAPHY

You may be surprised to learn that the creative industries are one of the fastest growing economic sectors in the UK.

With this in mind, our creative A-levels are designed to challenge learners to explore and channel their creativity preparing them for degree level study and careers in this eclectic sector.

These programmes can be an exhilarating and fast-paced experience and will require learners to be committed to pushing boundaries and thinking outside the box. Learners will develop their emotional intelligence and learn to become self-critical. Learners will be stretched and will develop great communication and organisational skills - all skills which are valued by employers regardless of industry sector.

All our creative courses are delivered by industry professionals who have a wealth of knowledge and are practising artists, photographers and musicians.

ENTRY REQUIREMENTS

All AS students should have a minimum of five GCSEs at grades A*- C (inclusive of English Language and Mathematics). Additionally, learners will be required to have a minimum GCSE grade as indicated below:

Art - Art B (or suitable portfolio of work) and English Language/Welsh (first language) C

Drama & Theatre Studies - Drama B (or equivalent) and English Language/Welsh (first language) B

Media Studies - English Language/Welsh (first language) B

Music - Music B (or equivalent minimum Grade 5) and English Language/Welsh (first language) B

Photography - Art C (or digital portfolio of work) and English Language/Welsh (first language) C

Please check the website for each individual subject's entry criteria.

MEET THE LECTURERS

ART - FINE ART

LOUISE SHEPPARD: BEd (Hons), MA

Louise studied at Falmouth, Bath and Swansea and has worked freelance before teaching. She enjoys exploring all 2D media, especially printmaking, and teaches across the Level 3 vocational programmes in Design as well as teaching A-level Art students.

ART - FINE ART & PHOTOGRAPHY

BARBARA SIMON: BA (Hons), PGCE

Barbara studied BA(Hons) Visual Arts at Swansea and is a practising commercial photographer and artist. She works in various media such as 35mm film, pinhole photography, digital photography and silkscreen printing, combined with mixed medium painting.

DRAMA & THEATRE STUDIES

JOHNNY LOCK: BA (Hons), PGCE

Johnny trained at East 15 Acting School and worked as an actor in London for a number of years before setting up his own theatre company and relocating to Pembrokeshire.

MEDIA STUDIES

ANDREA MCCARTHY: BA (Hons), PGCE

Andrea studied Broadcast Media and Popular Culture in Cardiff. After completing her degree she worked in America teaching Stop Motion Animation and Radio Broadcasting.

BEN LLOYD: BA (Hons), MA, PGCE

Ben graduated with a Fine Art Degree from Liverpool Art School followed up by a Masters in Fine Art at Cardiff School of Art and Design. Ben is a practicing contemporary artist working in various media including installation, video, painting and digital art.

MUSIC

STEPHEN KITE: BA (Hons), PGCE

A former Head of Music in a Comprehensive School in London, Stephen's influences in music are diverse and range from Jazz Piano to Drum and Bass. Stephen has helped forge extended projects with the Royal Opera House, English National Opera, Wigmore Hall and the Camden Roundhouse.

The background image shows two Erlenmeyer flasks on a laboratory bench. The flask on the left contains a yellow-green liquid, and the flask on the right contains a red liquid. Both flasks have wisps of white smoke or vapor rising from their openings. The scene is lit with a cool blue light, creating a scientific and mysterious atmosphere.

“

“The important thing is never to stop questioning (or learning).”

Albert Einstein

BIOLOGY, CHEMISTRY & PHYSICS

If you're curious about the world around us and want to understand how the human body works, or what lies beyond our own universe, then A-level science can help you to answer these questions plus many more.

Through our science A-levels you will develop skills in planning and conducting investigations, gathering information and evaluating findings. You will learn about the many roles that scientists play in our everyday lives and begin to explore where advances in science could take us in the future.

Studying science at A-level can lead to a wide variety of interesting degree courses and career opportunities. These programmes are designed to expand your mind and equip you with many transferable skills.

ENTRY REQUIREMENTS

All AS students should have a minimum of five GCSEs at grades A*– C (inclusive of English Language and Mathematics). Additionally, learners will be required to have a minimum GCSE grade as indicated below:

Biology - Biology B (plus another Science at B) or Science BB and Maths B

Chemistry - Chemistry B (plus another Science at B) or Science BB and Maths B

Physics - Physics B (plus another Science at B) or Science BB and Maths B (Also need to study AS Mathematics)

Please check the website for each individual subject's entry criteria.

MEET THE LECTURERS

BIOLOGY

KATE BASSETT-JONES: BSc (Hons), PGCE

After graduating with a degree in Environmental Biology, including a year teaching Environmental Education in Tennessee, Kate completed her PGCE in Cardiff. She teaches A-level Biology as well as running overseas expeditions and the Duke of Edinburgh Award for our College students.

EMMA EMBERSON: BSc (Hons), PGCE

Emma studied Applied and Agricultural Zoology at the University of Leeds and spent three months studying biodiversity in primary rainforest. Emma has been teaching maths and sciences for over 20 years. Her roles have included Head of Year (years 7, 10, 11) and SEN departmental coordinator.

BIOLOGY & CHEMISTRY

ANGHARAD MILES: BSc (Hons), PGCE

After graduating with a BSc (Hons) degree in Neuroscience from University College London, Angharad returned home to Pembrokeshire to pursue a career in teaching Biology, Chemistry and Mathematics.

PHYSICS

DR. HELEN MASTERS: MNatSci, MA, PhD, PGCE, CSciTeach, PGCE

After completing her masters degree in Natural Sciences at the University of Cambridge, Helen worked as a research scientist in the civil service, during which time she undertook her PhD. Helen then spent several years as a scientist and manager for multinational companies before moving into teaching.

CHEMISTRY

MICHAEL DAWES: BSc (Hons), PGCE

After graduating with a degree in Biochemistry from Bristol University, Mike moved into the petrochemical industry before joining the Pembrokeshire College teaching team.

A vibrant, stylized image of a city skyline at sunset or sunrise. The sky is a mix of deep blue, purple, and orange, with large, dramatic clouds. The city is filled with tall skyscrapers, many of which are illuminated with bright lights. The overall color palette is dominated by purples, blues, and oranges, giving it a cinematic and futuristic feel. A large, white, stylized quotation mark is positioned on the left side of the image, partially overlapping the cityscape.

“

“If you really look
closely, most
overnight successes
took a long time.”

Steve Jobs

BUSINESS STUDIES, ECONOMICS, GOVERNMENT & POLITICS & LAW

Today business, economics, politics and law are 'big' business. Through the Business Studies A-level you will develop a critical understanding of business organisations, the markets they serve and the process of adding value.

In Economics you will develop an appreciation of the contribution of economics to the understanding of the wider economic and social environment through studying both micro and macro economic theories.

For Government and Politics you will need an interest in contemporary politics and the ability to critically analyse, interpret and evaluate political information as you study the importance of politics to your own life and society as a whole.

Finally, choose Law and you will gain an understanding of how the law affects every person, every day of their lives, in some form or another. You will develop an understanding of both private and public law within the law of Wales and England alongside developing an understanding of legal method and reasoning as used by lawyers and the judiciary.

ENTRY REQUIREMENTS

All AS students should have a minimum of five GCSEs at grades A*– C (inclusive of English Language and Mathematics). Additionally, learners will be required to have a minimum GCSE grade as indicated below:

Business Studies - English/Welsh (first language) B and Maths or Numeracy B

Economics - English/Welsh (first language) B and Maths or Numeracy B

Government & Politics - English/Welsh (first language) B

Law - English/Welsh (first language) B

Please check the website for each individual subject's entry criteria.

MEET THE LECTURERS

BUSINESS STUDIES

KAREN NEVILLE: BSc (Hons), PGCE

Karen studied Business at Cardiff University. After graduating, she gained over ten years experience in management and training roles before joining the Business Department at Pembrokeshire College.

ECONOMICS

HELEN STODDART: BA (Hons), MSc

Helen studied economics and statistics at York University and Sheffield University before embarking on a career in local journalism. Helen switched to teaching over 20 years ago when she joined Pembrokeshire College where she has been part of the A-level team for over ten years.

GOVERNMENT & POLITICS

ALAN GREGORY: BMet (Hons), PGCE

Alan was born and educated in the UK. He has worked variously in the steel industry, in journalism and in education, both within the UK and overseas. He has been a teacher for the last twenty years, mostly abroad, and teaches Mathematics, Government and Politics, Computing, Science, English and Sport.

LAW

JOY SANDIFER: MSc, LLB (Hons), PGCE

Joy graduated with a law degree from Cardiff University followed by an MSc in Business Management after a successful career working with the Cardiff Chamber of Commerce. Joy has written and produced A-level revision guides and has developed Institute of Leadership and Management online courses for distance learning.

A futuristic space helmet with a clear visor. Inside the helmet, a colorful, abstract face is visible, composed of swirling, ethereal colors like blue, purple, pink, and orange. The helmet is dark and metallic, with various mechanical details and a camera lens on the side. The background is a dark, starry space with some nebula-like clouds in shades of blue, purple, and yellow.

“

“The computer
was born to solve
problems that did not
exist before.”

Bill Gates

COMPUTER SCIENCE

Information Technology is one of the fastest growing global industries constantly expanding and evolving. This rapid growth has led to a high demand for individuals who can produce tomorrow's technologies.

Choose AS Computer Science and you will need to think creatively, innovatively, analytically, logically and critically. You will also need the ability to analyse problems in computational terms through practical experience of solving such problems, including writing programs to do so.

ENTRY REQUIREMENTS

All AS students should have a minimum of five GCSEs at grades A*– C (inclusive of English Language and Mathematics). Additionally, learners will be required to have a minimum GCSE grade as indicated below:

Computer Science - English/Welsh (first language) B and Maths or Numeracy B

Please check the website for each individual subject's entry criteria.

MEET THE LECTURERS

COMPUTER SCIENCE

IAN LEWIS: MSc, BSc (Hons), PGCE

With a background working in the engineering industry, Ian graduated from Glamorgan University with a degree in Information Technology and has recently completed a Master's Degree in Cyber Security. He has been lecturing at Pembrokeshire College for over 15 years, is Programme Leader for the HND Applied Computing course and is a qualified ESTYN Peer Inspector.

SARAH WILLIAMS: BSc (Hons), PGCE

Sarah graduated from the University of Essex with a BSc in Computer Science. Passionate about encouraging more women into STEM subjects, she chose to qualify as a teacher. With over 20 years teaching experience, she now specialises in teaching programming and pure mathematics.

GILLIAN HESSE: BSc, MSc, PhD, PGCE

Gillian graduated from Bristol University with a BSc in Computer Science and then worked in industry for several years. She then returned to academia, gaining an MSc and PhD in Cognitive Science and holding several research positions. After several years abroad, Gillian became a Computer Science teacher, teaching all aspects of IT and Computer Science to learners aged 11-18 including GCSE, BTEC and A-level.



“

“A different language
is a different vision of
life.”

Federico Fellini

ENGLISH LANGUAGE & LITERATURE, ENGLISH LITERATURE, FRENCH, SPANISH & WELSH (SECOND LANGUAGE)

There are lots of good reasons to choose to study a language as one of your A-level subjects.

Being able to speak multiple languages can have many benefits socially as well as giving you an edge in today's global business economy.

Studying a foreign language will not only enrich your global cultural awareness but can also improve your comprehension and critical thinking skills - both of which are useful for many different degree courses and are also sought after by businesses.

Choose English Literature, or Language and Literature, and you will immerse yourself in exploring the complexities and richness of the English language.

ENTRY REQUIREMENTS

All AS students should have a minimum of five GCSEs at grades A*- C (inclusive of English Language and Mathematics). Additionally, learners will be required to have a minimum GCSE grade as indicated below:

English Language & Literature - English Language B & English Literature B

English Literature - English Language B & English Literature B

French - French B and English/Welsh (first language) B

Spanish - Spanish B and English/Welsh (first language) B

Welsh (2nd Language) - Welsh B

Please check the website for each individual subject's entry criteria.

MEET THE LECTURERS

ENGLISH LANGUAGE & ENGLISH LITERATURE

CAROLINE FULLER: MA, BA (Hons), PGCE

Caroline graduated with a BA (Hons) in English and then went on to complete an MA. A keen reader and writer she enjoys sharing her passion for literature with her students.

REBECCA MCKAY: BA (Hons), PGCE

After graduating from Cardiff University, Rebecca chose to teach. She enjoys the diversity of teaching both English Literature and the combined Language and Literature A-levels, supporting the critical and creative skills of students.

FRENCH

NATHALIE REES: PGCE

Nathalie graduated with a degree in English from the University of Bordeaux III France and spent a year in Pembrokeshire as a French Assistant. She subsequently did a Masters in Teaching French as a Foreign Language in the University of Bordeaux.

SPANISH

BEATRICE FORMAGGI: BA (Hons), PGCE

Beatrice studied Foreign Languages at the University of Pisa [Italy]. She taught foreign languages in Italy for three years before moving to Wales where she has taught in secondary schools and colleges.

WELSH SECOND LANGUAGE

HANNAH SALMON: BA (Hons), PGCE

After graduating from Cardiff Metropolitan University with a degree in Educational Studies and Welsh, Hannah went on to teach GCSE and A-level Welsh as a second language in various schools before joining the College.

The background is a dark purple gradient. It features various mathematical and geometric elements: large, semi-transparent numbers (7, 8, 2, 9, 5, 0, 3, 1, 4) in shades of pink and blue; a network of thin, light blue lines forming circles and arcs; and several small, bright blue star-like points of light. The overall aesthetic is scientific and mathematical.

“

“Mathematics is, in
it’s way, the poetry
of logical ideas.”

Albert Einstein

MATHEMATICS & FURTHER MATHEMATICS

If you are naturally gifted with numbers then A-level Mathematics and Further Mathematics may be for you.

The study of Mathematics is integral to everything around us. New mathematical theories are being discovered daily and it is these theories that often form the basis of scientific discoveries and inventions.

For those with a real passion for the subject then A-level Further Mathematics will allow you to acquire an even greater level of understanding.

If you are interested in pursuing a degree in Physics, Engineering or Economics then having an A-level in Mathematics will be of real benefit.

ENTRY REQUIREMENTS

All AS students should have a minimum of five GCSEs at grades A*– C (inclusive of English Language and Mathematics). Additionally, learners will be required to have a minimum GCSE grade as indicated below:

Mathematics - Maths (From Higher Tier - intermediate with tutor agreement only) B and Numeracy B

Further Mathematics - Maths A and Numeracy A (also need to study AS Level Mathematics)

Please check the website for each individual subject's entry criteria.

MEET THE LECTURERS

MATHEMATICS & FURTHER MATHEMATICS

ELAINE SINCLAIR: BSc (Hons), PGCE

Elaine studied Mathematics at Birmingham University. She taught Maths in secondary schools before spending two years teaching at a college in Ghana with Voluntary Service Overseas. Before joining Pembrokeshire College she worked at an educational charity supporting global issues through the curriculum.

TONY ANDREWS: BSc (Hons), NPQH, PGCE

Tony graduated from the University of London, King's College with a BSc in Mathematics. He has over 36 years teaching experience and has been an examiner for GCSE and A-level for some 30 years. His roles have included Head of Mathematics, Maths Adviser for Pembrokeshire, Deputy Headteacher and Headteacher.

SARAH WILLIAMS: BSc (Hons), PGCE

Sarah graduated from the University of Essex with a BSc in Computer Science. Passionate about encouraging more women into STEM subjects, she chose to qualify as a teacher. With over 20 years teaching experience, she now specialises in teaching programming and pure mathematics.

ANGHARAD MILES: BSc (Hons), PGCE

After graduating with a degree in Neuroscience from University College London, Angharad returned home to Pembrokeshire to pursue a career in teaching Biology, Chemistry and Mathematics.

EMMA EMBERSON: BSc (Hons), PGCE

Emma studied Applied and Agricultural Zoology at the University of Leeds and spent three months in the rainforest studying biodiversity. Emma has been teaching maths and sciences for over 20 years. Her roles have included Head of Year and SEN departmental coordinator.

MARION SEATON: BEng (Hons), PGCE

Marion graduated with a BEng in Manufacturing Engineering and Management and has worked in the UK, USA and Germany. Marion has been teaching GCSE and A-level Maths for over 20 years, her favourite A-level topic is surds.



“We are not makers of
history. We are made
by history.”

Martin Luther King, Jr

GEOGRAPHY, HISTORY & PHILOSOPHY, ETHICS, BELIEFS & VALUES

These humanities based subjects will give you a solid foundation of knowledge if you are looking to pursue a degree programme in one of these, or a related subject.

Study AS-level Geography and you will be encouraged to apply geographical knowledge, theory and skills to the world around us. This will enable you to develop a critical understanding of the world's people, places and environments in the 21st Century.

Choose History and you will study some of the most significant events of the past and uncover how some of these events have shaped the world in which we live today.

Finally, pick Philosophy, Ethics, Beliefs and Values and you will gain a fascinating insight into religion and its place in the wider world. You will undertake an in-depth study of one of the six major world religions as well as covering ethics and the philosophy of religion.

ENTRY REQUIREMENTS

All AS students should have a minimum of five GCSEs at grades A*– C (inclusive of English Language and Mathematics). Additionally, learners will be required to have a minimum GCSE grade as indicated below:

Geography - Geography B and English/Welsh (first language) B and Maths or Numeracy B

History - History B and English/Welsh (first language) B

Philosophy, Ethics, Beliefs and Values - Religious Studies B and English/Welsh (first language) B

Please check the website for each individual subject's entry criteria.

MEET THE LECTURERS

GEOGRAPHY

POWELL STRONG: MSc, PGCE

After graduating from Bangor University's School of Ocean Sciences in 1991, Powell worked as a coastal scientist, specialising in marine mammal studies but also working for a range of statutory and non-governmental organisations. Powell started lecturing at Pembrokeshire College in 1997 but maintained his links with industry. Powell has published work in the field of human geography.

HISTORY

KERI KENNY: BA (Hons), PGCE

Keri graduated from the University of Wales with a BA joint honours in English and History. She lectured at the University, then went on to teach at college level. Keri has taught overseas and online A-level History and is an examiner for AQA. Keri is currently working with former university lecturers on a heritage trail in South Wales.

PHILOSOPHY, ETHICS, BELIEFS & VALUES & HISTORY

SARAH-KAY TUSHINGHAM-FORD: BA (Hons), PGCE

After graduating with a degree in Religious Studies, Philosophy and Humanities from Lampeter University, Sarah-Kay went into teaching in Pembrokeshire schools. Sarah-Kay has been working with WJEC for several years as an examiner for GCSE, AS and A2 level papers.



“When you’ve got something to prove there’s nothing greater than a challenge.”

Terry Bradshaw

PHYSICAL EDUCATION

The Physical Education A-level isn't just for those who love sport. As part of this course you will learn about health, wellbeing and the human body.

This is a demanding course that will cover elements of biology, physics, sociology and psychology. Practical sessions form only a small part of this A-level programme which instead focuses on building knowledge through theory-based sessions.

To be successful on this course you will need to have a real interest in discovering the science behind sport. Successful completion of this programme can be the stepping stone to a wide variety of interesting careers including sports coaching, sports development or teaching.

ENTRY REQUIREMENTS

All AS students should have a minimum of five GCSEs at grades A*– C (inclusive of English Language and Mathematics). Additionally, learners will be required to have a minimum GCSE grade as indicated below:

Physical Education - PE B or Science B (if PE not taken)

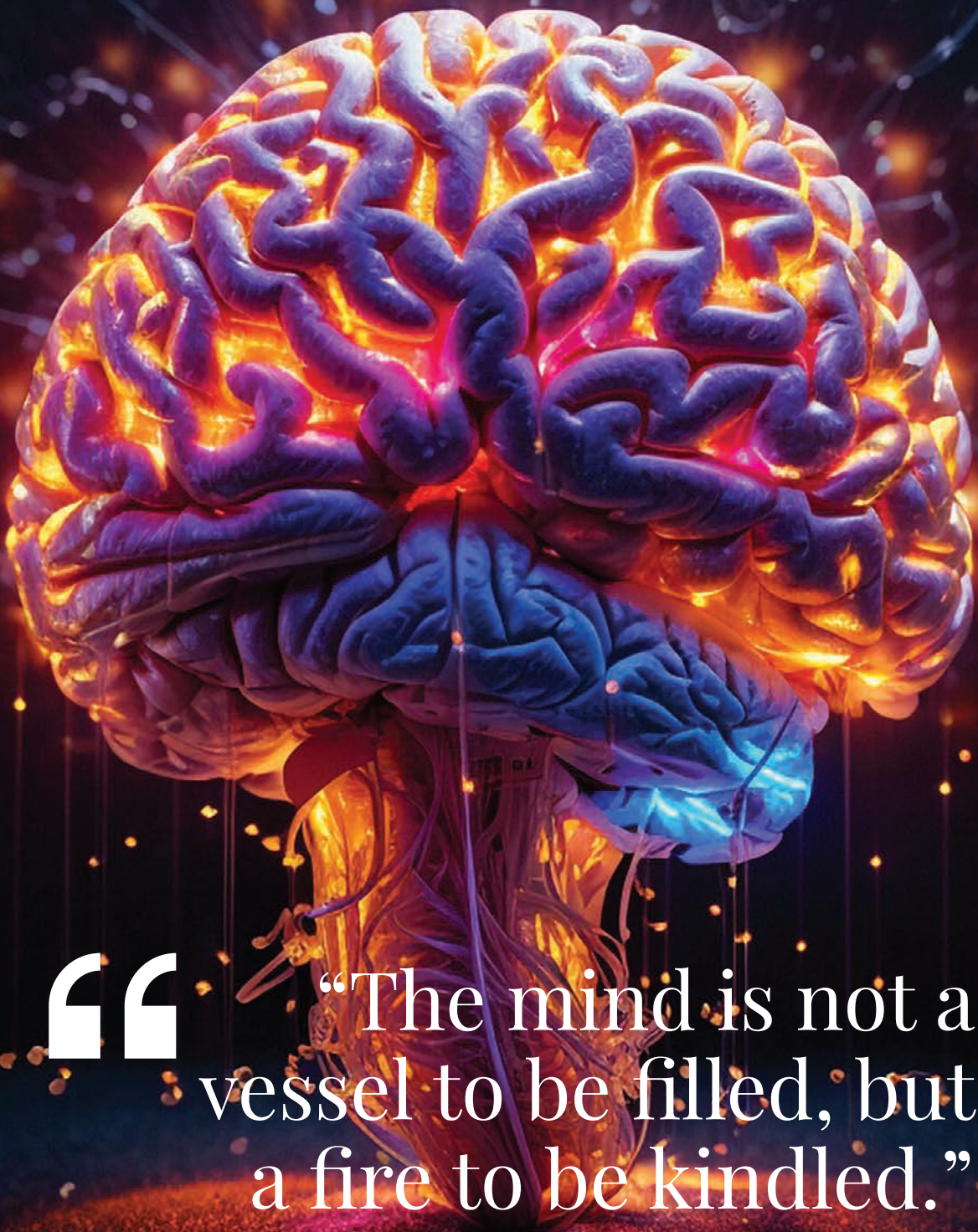
Please check the website for each individual subject's entry criteria.

MEET THE LECTURERS

PHYSICAL EDUCATION

CLAIR OWEN: BEd (Hons), PGCE

Clair qualified as a Physical Education Specialist in 1995 at Trinity College Carmarthen. She is actively involved in coaching and performing in a number of sports to international level. Clair believes that given the right motivation everyone can reach their potential.



“

“The mind is not a vessel to be filled, but a fire to be kindled.”

Plutarch

PSYCHOLOGY & SOCIOLOGY

Both Psychology and Sociology are fascinating subjects which are interested in the scientific study of people. Whilst these subjects often go hand-in-hand there are significant differences between them.

Study the A-level in Psychology and you will develop skills in psychological research, information technology, communication and critical thinking.

Choose to study Sociology and you will delve into a broad range of interesting topics including social exclusion, poverty, crime, religion and much more.

These diverse and fascinating subjects deal with how we perceive the everyday world and will help you to develop a greater understanding of human emotions, relationships and behaviours.

ENTRY REQUIREMENTS

All AS students should have a minimum of five GCSEs at grades A* - C (inclusive of English Language and Mathematics). Additionally, learners will be required to have a minimum GCSE grade as indicated below:

Psychology - English/Welsh (first language) B and Maths or Numeracy B

Sociology - English/Welsh (first language) B

Please check the website for each individual subject's entry criteria.

MEET THE LECTURERS

PSYCHOLOGY

CHARLIE ALEXANDER: BA (Hons), PGCE

Charlie studied Psychology and Education at Cardiff University. She has been teaching Psychology at the College for over 10 years.

KATE WILLIAMS: MSc (Hons), BA (Hons)ww, PGCE

Kate studied Psychology at Liverpool John Moores University and then carried out her Masters degree at Cardiff University. She has worked within the NHS and Social Services and has taught across both Health and A-level faculties for the past 25 years.

SARAH ARCHER: BSc (Hons), PGCE

Sarah studied Applied Psychology at UWTSD. Alongside her studies she worked at Magstim, pioneers of Transcranial Magnetic Stimulation (TMS). After her degree she worked for Hywel Dda University Health Board Mental Health department based at St. David's hospital in Carmarthen before moving into teaching.

SOCIOLOGY

CHRIS URACK: MA, BSc (Hons), PGCE

Chris graduated from SOAS University of London (the School of Oriental and African Studies). Before working at the College Chris worked for Global Connections, an educational charity that raised awareness about global issues in west Wales. He is originally from Australia and has travelled extensively and worked in different countries all over the world.

LOGAN HUGHES: BSc (Hons), MSc, PGCE

Logan graduated with a BSc (Hons) in Sport and Physical Education at Cardiff Metropolitan University focusing on ethics and sociology in sport. He then studied an MSc in Sociology and Ethics of Sport undertaking research into the sociological culture in sport and masculinity.

SAY HELLO!



pembrokeshire.ac.uk | 0800 9 776 788 | admissions@pembrokeshire.ac.uk

Disclaimer

The College takes all reasonable steps to provide the educational services and courses as described in this prospectus. Details are correct at the time of going to press but may be subject to change without prior notice. Courses will not run if learner numbers are insufficient. The College has the right to refuse individuals entry to courses in certain circumstances.

Prospective learners may be advised of more suitable alternatives, if appropriate.

