

THINKMORE.LEARNMORE.BEMORE.

2024/2025

FULL-TIME COURSES

A-levels | Diplomas | Apprenticeships



Welcome

We can't wait
for you to **join**
us.



YOUR JOURNEY STARTS HERE



MAE'R LLYFRYN HWN AR GAEL YN GYMRAEG.
THIS BOOKLET IS AVAILABLE IN WELSH.

Whatever you want to be, at Pembrokeshire College our aim is to ensure that you receive an exceptional learning experience.

At College you will focus on a subject that really interests you from sustainable textile design to mechanical engineering. With industry standard facilities, and teaching staff with real industry experience, we are dedicated to unlocking your potential and equipping you with the skills and experience you will need to progress to further study or into employment.

Once you have made the decision to join Pembrokeshire College you will be treated like an adult. We will provide you with the best possible teaching, care, support and guidance to help you along the way and enable you to fulfil your ambitions. In return, we expect you to strive for 100% attendance, to commit to your course and to take full advantage of all the opportunities presented to you.

I look forward to welcoming you to Pembrokeshire College.

Dr Barry Walters
Principal

Something for all



From entry through to Level 3, our range of vocational, apprenticeship and A-level qualifications will equip you with the skills and knowledge you'll need to take the first steps into your chosen career.

From the arts to engineering, hospitality to beauty and construction to care, we're sure that you'll find a course to suit you.

100+

Full-time courses

26

A-level subjects

99%

**Overall pass rate
for A-levels**



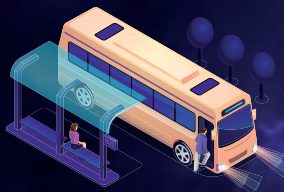
“Choose your course and
get industry ready”

Why choose College?



State-of-the-art Facilities

Some of the best learning resources and facilities in Wales.



Extensive Transport Network

Our transport network runs the length and breadth of the county making it easy for you to get to College.



Work Experience

To get you ready for the workplace you'll undertake work experience placements or work on real world briefs.



Choice

26 A-level subjects and over 70 full-time courses plus traineeships and apprenticeships.



Exceptional Support

All learners have access to a comprehensive range of support services.



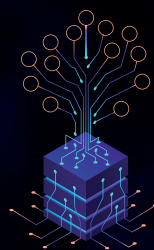
Distinctions

Extended Diploma learners can achieve Distinction/Distinction* grades (equivalent to three A*-A grades at A-level).



University Progression

Over 200 Level 3 learners progressed to university in 2023.



Employer Links

We have links with hundreds of local employers across a multitude of industry sectors to ensure our courses teach the skills employers are looking for.

Study at Pembrokeshire College and you'll have access to much more than just outstanding staff, IT facilities, classrooms and workshops.



COLLEGE RESTAURANT & COFFEE SHOP

Run by hospitality learners, the restaurant and coffee shop is open during set times for lunch and on a Thursday evening for themed cuisines.



REFECTORY, STARBUCKS & LITTLE FRESH

Whatever time you take your breaks you'll always find somewhere to grab a drink or a snack to fuel your learning!



THE HWB & THE HAFAN

The Hwb and the Hafan are two dedicated study spaces for individual, group or supported study. The library also offers a silent study space along with a variety of books and journals to support your studies. Learners can also borrow a laptop, on production of an ID card, to continue with their homework or assignments whilst in College.



HEALTHY BODY | HEALTHY MIND

Your health and wellbeing is super important. You can join one of our Sports Academies or take advantage of discounted student membership in the gym - great for when you need to let off steam between classes.

“GET INDUSTRY READY”

Preparing you for your Dream Career

Employers are looking for more than just qualifications. They want individuals who can work as part of a team, have great communication skills, are enthusiastic, have a positive attitude and are willing to learn the skills their employer needs to make their business grow.

As part of your course you may be required to undertake work placements. This is a great opportunity for you to showcase your skills to local employers.

Stand out from the crowd

All learners are also able to access the Employment Bureau. The Bureau is open daily and the friendly staff will help you to create a CV and search for job vacancies as well as helping you to prepare for interviews.

MAKING YOU JOB READY

We frequently work alongside local employers to ensure we are equipping you with the skills they are looking for. The involvement of employers varies from course to course but can include:



Working alongside guest chefs in our commercial kitchens.



Undertaking work placements in the NHS.



Work experience at Folly Farm, Manor House Park and many more.



Guest talks from the RAF, Army, Royal Navy and Chiltern Academy.



Work experience in a wide variety of childcare and healthcare settings.



Working with companies in the oil, gas, renewable energy and mechanical engineering sectors.

EMPLOYER LINKS

Our links with employers mean you get real insight into the various career opportunities available to you

Industry Ready

ALLT YR AFON - ALTRAD - BLUE GEM WIND - BLUESTONE
BOMBORA ENERGY - BRITISH ARMED FORCES - BURNS NUTRITION
CARREG CONSTRUCTION - CEREDIGION COUNTY COUNCIL - DP ENERGY
DRAGON LNG - DYFED POWYS POLICE - EDF ENERGY
ELLIOTS HILL - FOLLY FARM - GGT THOMAS - GROVE OF NARBERTH
HEATHERTON - HYWEL DDA UNIVERSITY HEALTH BOARD - INSITE TECHNICAL
JENKINS & DAVIES - MAINSTAY MARINE - MANOR PARK - ORE CATAPULT
PARK HOUSE CARE - PEMBROKESHIRE COAST NATIONAL PARK
PEMBROKESHIRE COUNTY COUNCIL - PEMBROKESHIRE ROAD SAFETY TEAM
RETREATS GROUP - RHYAL ENGINEERING - SLEBECH PARK
ST DAVIDS ASSEMBLIES - ST DAVIDS CARE IN THE COMMUNITY
ST BRIDES SPA HOTEL - THE CROWN ESTATE
THE PORT OF MILFORD HAVEN - TOTALLY WELSH
UNITED AEROSPACE - VALERO - WILLIAMS SHIPPING

Get Industry

READY...



You are the future!

...with our Destination Programmes

Our Destination Programmes are now running in a growing number of curriculum areas and are designed to complement curriculum delivery.

The sector specific programmes benefit both those learners looking to progress directly into employment on completion of their course as well as those looking to progress to university.

They are designed, with the input of employers, to raise awareness of current industry needs and to highlight both current and future career pathways.

Most Destination Programmes consist of a combination of masterclasses, guest speakers, industry and university visits.

Many then culminate in an extended project in year two, to develop research skills and increase knowledge.



Destination:
Animal Care



Destination:
Arts



Destination:
Business



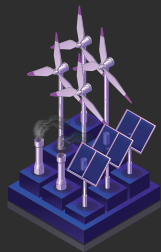
Destination:
Construction



Destination:
Hospitality



Destination:
NHS



Destination:
Renewables



Destination:
Tourism



Destination:
Success!

Apply online: pembrokeshire.ac.uk

GET INDUSTRY READY



Former Fashion & Textiles learner Rosie is working as a Print Designer at H&M headquarters, Stockholm



Former A-level learner Oliver studied at The Dyson Institute



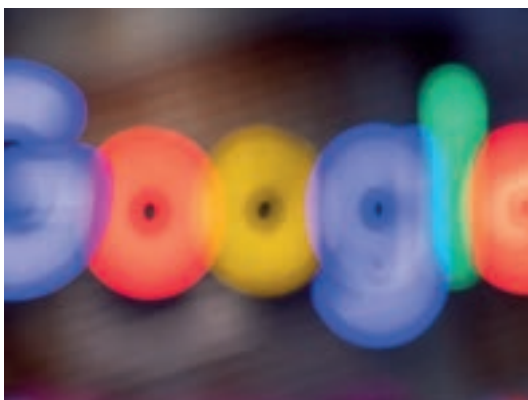
Former learners are working at the BBC in various roles including as software engineers and in the costume department

READY



Former Engineering learner Hywel is working for Mercedes with the McLaren F1 Team

“Where are they now?”



Former A-level learner Ellis is working for Google



Former Animal Management learner Kaitlynne undertook a year-long placement at Professor Noel Fitzpatrick's Supervet practice

Enrichment –

We offer our learners a range of enrichment opportunities which run alongside the academic timetable. These activities are supported by visiting experts, staff and volunteers and are open to ALL College learners.

There are also enrichment opportunities such as crafts and games most days in the Atrium.

Participating in enrichment activities will support not only your mental health and wellbeing, but will also help you to make new friends, and provide you with opportunities to learn new skills and most importantly have fun.

Enrichment clubs and societies include:

- Sports Academies and Fitness Activities
- Arts and Crafts
- Pride Group
- Debate Club
- Board and Card Games
- Mental Health Support Groups
- Dungeons & Dragons
- Clwb Cymraeg
- Duke of Edinburgh
- Gaming Group
- Safe Space
- Peripatetic Music Lessons
- County Orchestra



Get Involved



Industry standard facilities at your fingertips

CHECK THEM OUT!

...





Amazing Facilities

“New facilities are about new beginnings and endless possibilities.”

Bob Etheridge

Main Campus Facilities

We provide a wide variety of facilities on campus to ensure a smooth and enjoyable learning experience for our learners.

 Theatre & Dance Studios	 Construction Workshops	 Renewable Energy Centre	BELIEVE
CREATE	 Art & Design Studios	 Recording Studio	 SEED Kitchens & Restaurant
 Apple Mac Suites	 Employment Bureau	 Gym & Sports Hall	PASSION
INSPIRE	 Hair & Beauty Salons	 On-site Nursery	 Starbucks
 Learning Resource Centre	 Dark Room and White Room	 Little Fresh	MOTIVATE

Transition & Support

At Pembrokeshire College we provide an inclusive learning environment offering support to all learners.

KEEPING LEARNERS ON TRACK

Each learner is assigned to a Personal Tutor to ensure that they receive a consistent and appropriate level of support, advice and guidance. This can be in group sessions or on an individual basis. All learners agree to 100% attendance and sign a learner agreement at the outset of their course which includes expectations and behaviour.

AN INCLUSIVE ENVIRONMENT

The College is committed to providing an inclusive education for all learners with learning difficulties and/or disabilities. We have strong links with specialist provider schools, employers, charities and other specialist organisations to make the transition process as smooth as possible. Amongst other things, we are able to support with: Assistive Technology, Autism, Dyslexia, Learning Difficulties, Physical Disabilities, Sensory Impairments and General Wellbeing, plus much more.

EQUALITY & SUPPORT

The College adopts a highly inclusive and integrated approach to supporting learners with additional learning needs, which starts while they are in school. Comprehensive transition planning arrangements are in place and are undertaken in partnership with a wide range of specialist agencies, including a specialist Careers Wales Adviser.

The College's Learning Support team work closely with ALENCO's in schools to assist with transition arrangements. These members of staff attend school reviews, meet learners and parents or carers at the school, interviews or open events, and meet learners on their transition days. Strong transition arrangements exist between the secondary schools and the College to make transition as smooth as possible.

SPECIALIST SUPPORT ASSESSOR

A Specialist Support Assessor will undertake exam access arrangements, dyslexia profiling and screening to determine the nature and level of support needed. Learning Support is provided by over thirty Learning Support Assistants and two Communication Support Workers.

SAFEGUARDING & WELLBEING

The College takes safeguarding and wellbeing very seriously and has an established team which includes: Designated Senior Person, Safeguarding and Wellbeing Officers, Student Nurse, Finance Officer and an Inter-denominational Chaplain. The team also work alongside external agencies to provide referrals, advice, guidance and support.

LOOKED AFTER YOUNG PEOPLE (LAYP) & YOUNG CARERS

The College's Senior Designated Person is responsible for providing transition, care and support services for LAYP and young carers. If you are in care, a care leaver or a young carer please contact: safe@pembrokeshire.ac.uk for advice and support.

BRUSH UP ON YOUR ENGLISH, MATHS & WELSH

CRITICAL SKILLS: MATHS AND ENGLISH

Whether you are looking to go straight into employment or progress to higher level study, English and Maths are viewed by employers and universities as critical skills to have.

Whatever your programme of study, our lecturers and learning support staff are committed to helping you to improve your reading, writing, communication and mathematics skills so you can leave College with the skills you'll need to progress.

IMPROVING YOUR WELSH

All College learners are encouraged to have an appreciation of Welsh language and culture. Learners who have previously completed any learning through the medium of Welsh will be encouraged and supported to maintain and develop those skills.

All learners can access tutorials, essential skills and aspects of their course through the medium of Welsh if they wish to do so.

Helping you reach your goals

Onsite Support Facilities Include:



Careers



College Nurse



Communication Support Workers



Counsellors



Wellbeing HWB



Student Finance



Learning Coaches



Learning Support Assistants



Safeguarding, Wellbeing & Disciplinary Officers



Skills Support Advisors



Specialist Exam Assessor



Pastoral Coaches



UCAS Seren Hub



Work Placement Officer



Safeguardians



Youth Worker

HOW TO

APPLY



STEP 1 - OPEN EVENING

Attend one of our Open Evenings where you can take a tour of our facilities and speak directly to our lecturers and support teams. You can also find information on all our courses on our website: pembrokeshire.ac.uk

If you are unsure of which course is right for you, our friendly Advice and Guidance Team are always on hand as well as Careers Wales.

Check out our website for details of upcoming Open Evenings.

STEP 2 - APPLICATION

Apply via our website - search for your course then apply online. You'll need to create an account which will allow you to track your application.

If you need some help completing your application, please make an appointment to see our Admissions team by calling: 0800 9 776 788.

STEP 3 - MEET US

Once we have received your application you will be invited to attend one of our information events where subject lecturers will give you some more information on the course.

Finally, you will be asked to attend enrolment in August where we will check your GCSE results and enrol you onto your course.

COURSES EXPLAINED

On the following pages you will find a brief overview of the courses that we offer, the job roles that they could lead to and average salaries. Visit our website: pembrokeshire.ac.uk for full course information including the modules studied and entry requirements. If you're not sure which course would be most suitable for you, call our friendly Admissions team on 0800 9 776 788 for some impartial advice and guidance.

CHOOSE YOUR LEVEL:

ENTRY & LEVEL 1

Our Entry Level and Level 1 courses are suitable for you if you don't have any formal qualifications. If you don't get the GCSE grades you had hoped for, then you can start at Entry Level and work your way up.

Some practical courses require learners to start at Level 1 or Level 2, regardless of their GCSE grades. This is so you can learn the basic skills before progressing to higher levels or an Apprenticeship.

LEVEL 2 & 3

Most of our Level 2 courses require you to have GCSE grades at grade D and some even require you to have achieved C grades in certain subjects. Entry requirements for each course may vary.

After successfully completing your Level 2 programme you could progress onto a Level 3 course, employment or an Apprenticeship.

If you achieve five GCSEs at grade C or above (some courses may require you to have achieved B grades in certain subjects) you can go straight in at Level 3 (equivalent to studying A-levels).

All Level 3 programmes are two years in length. On successful completion you can apply to study at university or go directly into employment.

SELECT YOUR ROUTE:

A-LEVELS

If you like researching topics, reading about subjects to broaden your knowledge and are good at exams, then A-levels may be the route for you.

Choose to study A-levels at the College and you can choose from 26 AS subjects - the broadest range in the county. If you are interested in studying A-levels, see our A-level brochure to find out more.

VOCATIONAL COURSES

Our vocational courses offer nationally recognised qualifications that equip you for employment in a specific sector. Our Level 3 Extended Diplomas are equivalent to A-levels and allow you to progress to university.

For many subjects, you will be taught in learning environments that replicate those you will find in industry by lecturers who have years of experience within the sector.

APPRENTICESHIPS

This is a work-based learning programme that allows you to earn a wage whilst studying for a qualification and learning practical skills in the workplace. To undertake an apprenticeship you need to find an employer who is willing to support you throughout the qualification. If you do not have an employer we may be able to help you find one.

All apprenticeship programmes include qualifications in literacy and numeracy unless you have already obtained them at school.

01

Jobs Growth Wales+



DID YOU KNOW?

EARN WHILE YOU LEARN

Whilst you're on a JGW+ programme you'll get paid to train.

If you attend the full 21 hours you will get paid £42 a week plus meal allowance.

TRY BEFORE YOU COMMIT

With the JGW+ pathways you get the opportunity to try career areas you think you may be interested in before you commit to the next level of learning.

TAILORED SUPPORT

You'll have a mentor to support you whilst you're on the programme.

GAIN REAL SKILLS

As part of all our JGW+ pathways you'll gain real skills that employers are looking for increasing your employability.

The Jobs Growth Wales+ programme, led by the Welsh Government, is supported by the European Social Fund

GET A TASTE OF YOUR FUTURE CAREER

Jobs Growth Wales+ is a flexible programme focused on helping young people aged 16-18 who are disengaged from learning to reach their full potential and take their first steps into the world of work.

Our programmes aim to give you the skills, qualifications and work experience needed to either get a job or progress to further learning such as a higher level course or an apprenticeship.

You can choose from a variety of subject areas including:

- » Business and Leisure
- » Engineering
- » Hair and Beauty
- » Health Care and Childcare
- » ICT
- » Motor Vehicle

This programme offers a totally different learning environment and is delivered by a friendly and experienced team who are committed to seeing you succeed.

Contact our admissions team for more information:

admissions@pembrokeshire.ac.uk
0800 9 776 788



Destinations:

After successfully completing a Jobs Growth Wales+ pathway, learners can progress to higher level further education programmes, apprenticeships or employment.

Apprenticeship Pathways



DID YOU KNOW?

LEVEL 2

Foundation Apprenticeship
(Equivalent to five GCSEs)

LEVEL 3

Apprenticeship
(Equivalent to two A-levels)

LEVEL 4 & ABOVE

Higher Apprenticeship
(Equivalent to a Higher National Diploma (HND) or Foundation Degree)

To undertake an apprenticeship you will need to be in full-time employment with a business that can support you. The Apprenticeship Matching Service or the College Employment Bureau may be able to help find you an employer.

EARN AND LEARN WITH AN APPRENTICESHIP

Apprenticeships are available in a growing number of sectors and allow you to earn a wage whilst continuing your education.

As part of an Apprenticeship you will learn on and off the job undertaking a structured programme of training which will lead to a recognised apprenticeship qualification.

On the job training - you will be employed by a company and work alongside more experienced members of staff to learn your trade.

Off the job training - we have a variety of delivery models and some apprenticeships will require you to attend College one day a week to learn the theory. You will also be expected to complete online assessments and assessments in the workplace.

The Facts

92% of apprentices in work felt that their apprenticeship had a positive impact on their career.

92% of apprentices said their career prospects had improved.

90% of apprentices remain employed after completing their apprenticeship.

Higher Apprentices could earn £150K more on average over their lifetime compared to those with level 3 vocational qualifications.

Courses

Advice & Guidance	Level 3, 4
Automotive	Level 2, 3
Barbering	Level 2
Beauty Therapy	Level 2, 3
Business Administration	Level 2, 3, 4
Childcare & Playwork	Level 2, 3, 4, 5
Construction: <i>bricklaying, carpentry, electrical, joinery or plumbing</i>	Level 3
Construction Maintenance	Level 2
Construction Management	Level 4
Customer Service	Level 2, 3
Engineering (various pathways)	Level 2, 3
Hairdressing	Level 2, 3
Healthcare, Care	Level 2, 3, 4, 5
Hospitality	Level 2, 3
ILM Management	Level 2, 3, 4, 5
IT, Software, Web & Telecoms Professionals	Level 2, 3
Teaching, Learning & Development	Level 2, 3

03

A-levels 26 Subjects



CHOOSE FROM

- Biology
- Business Studies
- Chemistry
- Computer Science
- Drama & Theatre Studies
- Economics
- English Language & Literature
- English Literature
- Fine Art
- French
- Further Mathematics
- Geography
- Government & Politics
- History
- Law
- Mathematics
- Media Studies
- Music
- Photography
- Physical Education
- Philosophy, Ethics, Beliefs & Values
- Physics
- Psychology
- Sociology
- Spanish
- Welsh - Second Language
- Advanced Skills Baccalaureate Wales

OPEN UP A WORLD OF OPPORTUNITY

At Pembrokeshire College, we employ qualified teaching staff who have specialist academic post-16 qualifications and real industry expertise. This combination ensures that you receive high quality provision that is both engaging and stimulating, guaranteeing you the best possible start at an advanced level.

THE A-LEVEL PROGRAMME

There are two routes that our A-level learners can choose from:

Route 1: 3 A-level subjects and the Advanced Skills Baccalaureate Wales.

Route 2: 4 A-level subjects and the Extended Project Qualification (EPQ) (must have 6+ A* at GCSE).

In addition to your academic study, every A-level learner attends a weekly group tutorial and 1:1 appointments with their dedicated Pastoral Coach.

Our four-day weekly timetable combines the county's widest choice of A-levels with protected time for sports academies, and other enrichment opportunities, plus an independent study day without any loss to curriculum time.

FACILITIES

On A-levels, you will have access to industry-standard facilities. We have purpose-built laboratories, IT/MAC suites, the Merlin Theatre, creative studios and modern classrooms. With lots of study and social spaces to choose from, your time on campus can be both purposeful and enjoyable.

Destinations

We are so proud of the phenomenal destinations of our A-Level learners. We celebrate consistent Oxbridge success, top university places and apprenticeship routes.

University Destinations:

University of Oxford | University of Cambridge | University of Bristol | University of Warwick | University of Leeds |
University of Liverpool | University of Exeter | Cardiff University | Durham University

Animal Management & Countryside Skills



DID YOU KNOW?

Former learners have gone on to secure key positions with local animal parks including head penguin keeper and head lion keeper at Folly Farm.

WHAT CAN YOU EXPECT TO EARN?

£19,000 - £23,000
Average salary for those working in an animal care related profession

£20,000 - £25,000
Average salary for countryside rangers depending on position

£25,000 - £32,000
Average salary for a senior veterinary nurse

£35,000 - £60,000
Average salary for a vet

BACK TO NATURE

Choose Animal Management and you will have the opportunity to develop hands-on skills by working with a range of small and large mammals, birds and reptiles at our centres at Withybush and Folly Farm. You may also be able to undertake work placements to further enhance your knowledge of domestic, exotic and wild animals.

Choose Countryside and Environment and you will find yourself out and about throughout Pembrokeshire utilising the environment around us to develop skills in conservation and countryside management.

With our Countryside programme you will learn to operate a tractor, work in the great outdoors, help maintain nature reserves and learn tool skills. This is great for those who love to be outside!

Whichever pathway you choose, you will also be involved in a range of community projects.

FACILITIES

As a Level 1 or 2 Animal Care learner you will have access to fully equipped animal care facilities at the John Burns Centre for Learning, our dedicated centre in Withybush, where you will gain a broad range of experience handling and caring for a range of small mammals, birds and reptiles.

Our Level 3 Animal Management learners will be based at Folly Farm and have unique access to work alongside the keepers for practical skill development with their wide range of animals.

If your interest lies with protecting the environment, countryside learners will spend a significant amount of time undertaking practical activities with conservation bodies such as Pembrokeshire Coast National Park and Pembrokeshire County Council.

Courses

Animal Management	Level 3
Animal Care	Level 2
Countryside & Environment	Level 2
Land-based Studies (Countryside)	Level 1
Land-based Studies (Animal Care)	Level 1

Future Careers:

Animal Retail Worker | Animal Behaviourist | Animal Health Care Assistant | Animal Keeper | Animal Breeder | Conservationist | Park Ranger | Veterinary Nurse | Wildlife Park Manager | Zoologist

Applied Science & Food Science



DID YOU KNOW?

These courses are equivalent to three A-levels (ideal for progression to university).

WHAT CAN YOU EXPECT TO EARN?

£23,000 - £50,000

Salary range for a toxicologist

£26,500 - £60,000

Salary range for a biochemist

£25,000 - £80,000

Salary range for a pharmacologist

£37,000 - £52,000

Salary range for a crop yield specialist

WELCOME TO A WORLD OF SCIENCE

Applied Science

This course provides an opportunity to study all three disciplines of science; Biology, Chemistry and Physics, in a practical way. Units delivered include Genetics and Genetic Engineering, Microbiology, Applications of Organic Chemistry, Forensic Evidence, Collection and Analysis, Astronomy and Space Science and Medical Physics Applications. Our qualified teaching staff, who have specialist knowledge of their areas of science, will run stimulating theory sessions and engage you in hands-on practical sessions.

In addition to your studies, every Applied Science learner attends a weekly group tutorial and 1:1 appointments with their dedicated Pastoral Coach.

Food Science

On this Level 3 course you will discover the science of food and understand the value of nutrition in our diets. You will learn how food science and nutrition helps us to understand and study the fascinating world of food, understand the food supply chain, and learn about new technologies in food and food production. You will also learn about the importance of micro and macro nutrients and explore what happens to food whilst it's in your body.

This course is studied alongside a diploma in Applied Science and you will attain the equivalent of three A-levels, enabling progression to university and a wide variety of career destinations.

FACILITIES

We will aim to stretch and challenge you to achieve your potential in a safe, happy and enriching environment. You will have access to state-of-the-art facilities with purpose-built science laboratories and modern classrooms. You will work closely with our science laboratory technicians to plan and conduct practical experiments and will be able to utilise a range of scientific kit to develop your practical skills.

Courses

Applied Science Level 3
Food Science Level 3

Future Careers:

Biomedical Engineer | Chemical Engineer | Flavour Chemist | Food Scientist | Forensic Scientist | Laboratory Technician | Nuclear Engineer | Oceanographer | Research Scientist | Sensory Technician | Technologist | Technical Brewer | Veterinary

06

Arts: Creative & Performance



DID YOU KNOW?

Former learners have gone on to work for creative companies across the UK designing materials for international brands such as Hilton Hotels, Pritt, Uniball and Subaru.

WHAT CAN YOU EXPECT TO EARN?

£40,000 - £60,000

Salary range for a music producer

£39,000

Average salary for an arts producer

£19,000 - £23,000

Salary range for a junior graphic designer

£35,000

Average salary for a VFX artist

EXPRESS YOURSELF

As part of your course you will create a portfolio of work to set you on the path either to further study or into employment.

These courses combine practical work, theory and work related projects to give you the expertise needed to succeed in these industries. All our lecturing staff have real industry experience and are professional creative practitioners.

Through events, exhibitions, end of year performances and real live briefs you will gain exposure to the creative arts industry and build a portfolio of materials ready for your next step.

FACILITIES

Whichever one of our creative courses you choose, you will benefit from state-of-the-art studio facilities and the latest industry software including:

- > Dedicated Creative Studios
- > White & Dark Studios
- > Silk Screen Studio & Intaglio Printmaking Studio
- > 3D & Ceramics Workshop
- > Apple Mac Suites & Animation Media Studio
- > Film & Audio Recording Equipment
- > Editing Software
- > 250 Seat Theatre, Control Room and Dance & Drama Studios
- > Costume & Props Workshops
- > Recording & Live Sound Studios

Courses

BA (Hons) Design Studies	Level 6
Diploma Art & Design (Foundation Studies)	Level 3/4
Graphic Design & Illustration	Level 3
Sustainable Textile Design	Level 3
Creative Media Production	Level 3
Music Performance & Production	Level 3
Performance & Production Arts	Level 3
Art & Design	Level 2
Art, Design & Media	Level 1

Future Careers:

Advertising | Actor | Animator | Art Therapist | Freelance Designer | Graphic Designer | Illustrator | Live Events Producer | Marketing & Promotions Manager | Music Producer | Photo Journalist | Product Photographer | Set Designer | Sound Technician

07

Built Environment



DID YOU KNOW?

Former learners have competed in competitions across the globe. A former carpentry learner represented Team GB in the WorldSkills Finals in Russia where he achieved a Medallion of Excellence.

WHAT CAN YOU EXPECT TO EARN?

£25,000 - £40,000

Salary range for a carpenter

£20,000 - £50,000

Salary range for a bricklayer

£45,000 - £80,000

Salary range for an architect

£23,000 - £51,000

Salary range for an electrical engineer

LEARN A TRADE TO SECURE YOUR FUTURE

Whether you want to learn a trade, or fancy a career as an architect or a civil engineer, our construction courses are a great place to start. We work with a variety of employers, including GGT Thomas & Son, Carreg Construction, WB Griffiths, WJG Evans and Heating & Boilers. We also encourage you to take part in skills competitions to ensure that on completion of your course you have the skills that employers are looking for.

For those interested in construction management, the Level 3 course gives you access to industry standard software such as REVIT and Auto-CAD and will prepare you for a wide range of careers including Architecture, Structural Engineering, Civil Engineering and Surveying. This course can lead to direct employment or act as a pathway to higher education.

FACILITIES

The purpose built Construction Centre contains a 380m² brick workshop, two carpentry workshops and a project area with the ability to simulate real world carpentry installations including roofing, hanging doors and assembling staircases. In addition, the joinery machine shop houses industrial standard machinery with CNC capability.

Recent investment now means that we have a total of five plumbing workshops in addition to our three electrical workshops. Through these up-to-date facilities we provide a realistic work environment for our learners.

We provide training and assessment for Oftec (Oil), ACS gas, water regulations and hot water safety courses.

Courses

HNC Construction Management & Technology	Level 4
Construction & Built Environment	Level 3
Construction & Building Services*	Level 2
Construction Skills & Building Services*	Level 1

*Learners choose from a combination of two trade areas: electrical/plumbing, brickwork/plastering or carpentry/roofing.

Future Careers:

Acoustics Consultant | Architect | Bricklayer | CAD Technician | Electrician | Estimator | Carpenter | Heritage Officer | Joiner | Landscape Architect | Plumber | Quantity Surveyor | Site Manager | Town Planner | Renewable Energy Systems

08

Business



DID YOU KNOW?

EARN WHILE YOU LEARN
Previous business learners have taken part in Big Ideas Wales business bootcamp and set up their own business whilst in College.

WHAT CAN YOU EXPECT TO EARN?

£30,000 - £40,000
Salary range for a marketing manager

£30,000 - £40,000
Average salary for an human resource manager

£25,000 - £35,000
Salary range for a events manager

£100,000+
Average salary for a chief executive

FIND A GAP IN THE MARKET

Our expert business lecturers can help set you on the right path.

As a business learner you will learn about marketing, finance, events and business decision-making as well as covering topics such as branding and merchandising.

You will also be encouraged to take part in competitions to really get you thinking and to equip you for the challenges that lie ahead in the fast-paced world of business.

In addition to their main programme, Level 3 learners will also complete the Destinations Programme whilst Level 2 learners have the opportunity to work on business projects. These additional opportunities help to raise awareness and prepare learners for the world of work.

FACILITIES

With state-of-the art classrooms featuring digital projectors, College-wide WiFi and access to Microsoft Office packages, business journals and e-learning resources, from day one you will be part of the hyper-connected business world preparing you for employment in a multitude of roles that form the backbone of today's business environment.

For budding entrepreneurs, our Enterprise Co-ordinator will help you to develop your idea and build a business plan as well as giving you opportunities to test trade. Email them to find out more: enterprise@pembrokeshire.ac.uk

Throughout the course you will also benefit from guest speakers including role models from industry and successful entrepreneurs.

Courses

Business Level 3
Business & Travel/Tourism Level 2

Future Careers:

Accountant | Advertising Executive | Business Analyst | Events Management | Financial Management | Human Resources | Law | Management Consultancy | Marketing | Public Relations | Retail Buyer | Sales Executive

Childcare



DID YOU KNOW?

Learners compete in local and national competitions to build their skills and grow their confidence. In 2021/22 learners secured gold and silver in the Skills Competition Wales Childcare competition.

WHAT CAN YOU EXPECT TO EARN?

£27,000 - £42,000

Salary range for a primary teacher

£19,000 - £26,000

Salary range for a nursery nurse

£25,000 - £40,000

Salary range for a social worker

£40,000 - £48,000

Average salary range for a child therapist

HELP CHILDREN TO GROW, DEVELOP AND LEARN

If you enjoy spending time with children and are looking for a rewarding career where your days are spent helping children to learn, develop and grow then a career in the childcare sector will be for you.

The Level 1 Diploma will develop basic skills and knowledge, enabling you to progress onto Level 2 in either childcare or healthcare.

Level 2 and 3 provide you with the qualifications to work in a range of settings within the childcare industry and is a licence to practice.

Level 3 will also earn you UCAS points to progress to university.

FACILITIES

Childcare learners benefit from large, diverse classroom spaces, suitable for theory lessons as well as practical activities.

Located close to the College's BrightStart Day Nursery, you will gain hands-on experience which forms an integral part of achieving the Level 2 and 3 qualifications to practice.

With the help of the College's work experience department you will be placed in a variety of childcare settings throughout the duration of your course, developing professional skills and a wealth of hands-on experience to ensure you are employable upon qualifying.

Courses

Children's Care, Play, Learning & Development - Practice & Theory*..... Level 3
Children's Care, Play, Learning & Development - Core/Practice & Theory*..... Level 2
Introduction to Health, Social Care, Early Years & Childcare Level 1

*Also available as an Apprenticeship or work-based pathway.

Future Careers:

Child-minder | Crèche Assistant | Early Years Education | Family Support Worker | Nanny | Nursery Assistant | Primary Teacher | Paediatric Nurse | Social Worker | Teaching Assistant

10

Computing



DID YOU KNOW?

Former learners have gone on to work in professional IT roles including in cyber forensics with the Metropolitan Police.

WHAT CAN YOU EXPECT TO EARN?

£40,000+

Average salary for an IT professional

£30,000 - £45,000

Salary range of a software developer

£20,000 - £50,000

Salary range of a games developer

£40,000

Average salary for a robotics engineer

A WORLD THAT NEVER SLEEPS

With constantly evolving technologies, our Computing and ICT courses are designed to equip you with the skills and knowledge that will put you in demand in this fast-paced industry.

As a computing learner you'll benefit from a broad range of modules including: web design, systems analysis, systems design, event driven programming, digital graphics and technical support, allowing you to follow any number of higher level courses from Computer Networking to Computer Forensics and Ethical Hacking.

All our computing courses are career-focused with an emphasis on practical training ensuring you gain the skills and knowledge required by today's businesses.

FACILITIES

Computing learners have access to five IT suites along with access to a full range of software as used in industry including Adobe Creative Cloud and Visual Studio.

You'll also be able to access a range of hardware including wireless routers and printers allowing you to practise setting up networks.

The new Enhanced IT programme is an intensive course which involves a regular work placement and additional study in cyber security, robotics and coding.

Courses

Computing	Level 3
Computing & Digital Technology	Level 2
Creative Technology	Level 2
Information Technology	Level 1

Future Careers:

Computer Forensics | Cyber Security | E-Commerce | Games Developer | IT Consultancy | IT Support | Network Administrator | Project Manager | Programmer | Coding Software Manager | Software Developer | System Support Technician | Web Designer

11

Engineering



DID YOU KNOW?

We offer a number of engineering degree pathways validated by the University of Wales Trinity Saint David.

WHAT CAN YOU EXPECT TO EARN?

£25,000 - £80,000

Salary range of an renewable energy engineer

£33,000 - £60,000

Salary range of a robotics engineer

£20,000 - £50,000

Salary range of a software developer

£22,000 - £80,000

Salary range for the merchant navy

ENGINEER YOUR FUTURE

Without engineers the world as we know it would grind to a standstill. Whichever route you choose, your time will be split between learning the theory and spending time in our industry standard workshops learning your trade.

These practical hands-on courses will prepare you for an apprenticeship, progression to university and a career in one of the many strands of the engineering industry. Throughout your course you'll get to meet with a wide variety of employers to help you choose the career path that is right for you in this exciting sector.

FACILITIES

You'll have access to industry standard facilities including:

Automotive: Three fully featured workshops, a rolling road, specialist computer diagnostic equipment and camera operated wheel alignment.

Marine & Maritime: We have a modern and well equipped marine engineering facility which prepares learners for a career in the marine and maritime industry.

Welding, Fabrication, Plating & Pipework: New centre of excellence with an industry standard indoor and outdoor welding/fabrication training facility.

Electronic Engineering: Virtual Control Room, PLC laboratory with Siemens systems and a PLC target training system, instrumentation, control and an electronics training facility.

Mechanical: Lathes, milling machines, surface and cylindrical grinders, forges, sheet metal work equipment and access to specialist software e.g. AutoCAD, Solidworks and Inventor.

Courses

Automotive Maintenance	Level 1
Electronic Engineering	Level 3
Enhanced Mechanical Engineering	Level 3
Welding, Fabrication, Plating & Pipework	Level 1, 2, 3
Maritime Pre-cadetship	Level 3
Marine Pre-cadetship	Level 3
Mechanical Engineering Craft	Level 2
Light Vehicle Maintenance & Repair Principles	Level 2

Future Careers:

CAD Designer | CNC Operator | Diagnostic Technician | Electrical Engineer | Maintenance Engineer | Marine Engineer | Mechanical Engineer | MOT Tester | Process Operator | Quality & Inspection Officer | Service Manager | Vehicle Fitter | Welder

12

Hairdressing & Beauty Therapies



DID YOU KNOW?

Former beauty learners have secured full-time employment at prestigious establishments such as Ragdale Hall Spa and onboard Steiner cruise ships.

WHAT CAN YOU EXPECT TO EARN?

£20,000 - £25,000

Salary range for a make-up artist

£19,000 - £24,000

Salary range for a junior stylist

£25,000 - £30,000

Salary range for a salon manager

£19,500 - £42,000

Salary range for a massage therapist

BE BOLD. BE DARING. BE BEAUTIFUL.

If you enjoy making people look and feel amazing then our suite of hairdressing, beauty and complementary therapy courses are the first step to making it your full-time job.

Our hair and beauty salons are open to the public and re-create a real workplace environment. Level 1 courses develop your general skills such as customer service which are transferable to any career as well as building basic skills in your chosen pathway. Level 2 and 3 qualify you to practice and enable you to build your technical skills and knowledge before entering employment.

Our strong links with local hotels and spas, as well as national employers such as Steiner Cruise Liners and Ragdale Hall, can open up a variety of career pathways or progression onto higher education.

FACILITIES

Your training will take place in industry standard salons and treatment rooms using the latest equipment and products including Wella, Cloud Nine, Eve Taylor, OPI and MAC.

Each year learners are encouraged to compete in regional and national skills competitions. You'll also have the opportunity to attend masterclasses and events.

Follow us: @pembs.salons

Courses

Beauty *	Level 1, 2, 3
Complementary Therapies	Level 2, 3
Hairdressing*	Level 1, 2, 3

*For more experienced learners, an accelerated Level 1/2 programme is available. This will be reviewed after enrolment.

Future Careers:

Barber | Beauty Therapist | Colour Technician | Complementary Therapist | Hairdresser | Image Consultant | Make-up Artist | Nail Technician | Salon Manager | Spa Therapist | Wig Maker

13

Health & Social Care



DID YOU KNOW?

The NHS is the largest employer in the UK health care sector employing more than 1.5 million people.

11,000 are employed across Hywel Dda University Health Board alone.

WHAT CAN YOU EXPECT TO EARN?

£27,000 - £36,000

Salary range of a health visitor

£23,000 - £37,000

Salary range of a midwife

£20,000 - £70,000

Salary range of a radiologist

WANT A CAREER FOCUSED ON HELPING PEOPLE?

If the answer is yes, then a course in Health and Social Care could help you reach your dream job.

The Level 1 Diploma will develop basic skills and knowledge, enabling learners to progress onto Level 2.

Level 2 is the new industry standard qualification which is mandatory for all workers employed in a care setting.

Successful completion of the Level 3 course can lead to progression onto a higher level programme allowing you to access future career opportunities including: Ambulance Care Assistant, Health Care Assistant, Care Worker, Social Worker, Support Worker and Learning Mentor.

Access to HE (Healthcare), Access to HE (Bioscience) and Skills for Further Study are suitable courses for mature learners wishing to return to learning.

FACILITIES

All courses have access to a variety of resources which would be used in care and hospital settings and some will be based in our newly refurbished laboratories.

Work placement is a fundamental part of our courses, especially on Level 2 and 3 where attendance at a placement in a care or health setting is required. Links with employers such as Hywel Dda University Health Board and care homes across the county, allow learners to apply skills they have learnt in the classroom in a real environment.

Courses

Access to HE (Health)	Level 3
Access to HE (Bioscience)	Level 3
Health & Social Care	Level 3
Health & Social Care*	Level 2
Skills for Further Study	Level 2
Health & Social Care	Level 1

*Also available as Apprenticeship or work-based pathway.

Future Careers:

Care Worker | Forensic Scientist | Health Visitor | Midwife | Nursing (various) | Occupational Therapist | Paramedic | Psychologist | Radiographer | Social Worker | Sociologist | Youth Worker

14

Hospitality



DID YOU KNOW?

Previous learners have competed globally at the WorldSkills Finals in Kazan, Russia and have also gained experience in high-end establishments such as the Berkeley, London, The Houses of Parliament and the Grove of Narberth.

WHAT CAN YOU EXPECT TO EARN?

£25,000 - £40,000

Salary range for a dietician

£35,000

Average salary for sous chef

£26,500 - £42,000

Salary range for a senior restaurant manager

£44,000

Average salary for a demi chef

£58,000

Average salary for a senior chef de cuisine

COMBINE FOOD AND PEOPLE FOR A TASTY CAREER

As part of our courses you will learn how to produce à la carte cuisine as well as learning barista skills, silver service, flambé, mixology and excellent customer service skills plus so much more.

You will also be encouraged to undertake work placements. Previous placements have included: the Grove of Narberth, Llys Meddyg, The Retreats Group, Hammet House, Gleneagles, Celtic Manor, Harbourmaster (Aberaeron) and Slebech Park. You will also have the opportunity to showcase your skills in competitions such as WorldSkills UK.

Learners will also take part in SEED masterclass workshops where you will learn from top names in the hospitality industry and visit renowned restaurants.

FACILITIES

As a hospitality and catering learner you will learn in our industry standard kitchen, training kitchen and commercial restaurant with bar and coffee shop.

You will gain skills both in the kitchens and front of house. With fine dining evenings every Thursday during term time where you will also work alongside some of the top chefs in Pembrokeshire and beyond.

Our restaurant is open to the public, as well as to College staff and learners, giving you the opportunity to put your skills into practise.

Follow us on instagram: @seed_restaurant

Courses

Professional Cookery* /
Hospitality, Supervision & Leadership Level 3
Professional Cookery / Culinary Skills*..... Level 2
Introduction to Professional Cookery /
Food & Beverage Service* Level 1

*For more experienced learners, an accelerated Level 1/2 programme is available. This will be reviewed after enrolment.

Future Careers:

Bar Manager | Chef (various positions) | Dietitian | Food Technologist | Events Management | Hospitality Management | Hotel Operations | Environmental Health Officer | Sommelier | Technical Brewer

15

Protective Services & Military Preparation



DID YOU KNOW?

Former military preparation learners are now employed throughout the armed forces including the Royal Logistic Corps, Welsh Guard and Royal Marines.

WHAT CAN YOU EXPECT TO EARN?

£23,000 - £38,000

Salary range of a police officer

£25,000 - £39,000

Salary range of a paramedic

£30,000 - £41,000

Salary range for a probation officer

£21,000 - £123,000

Salary range for the military

RISE ABOVE THE REST

Our protective services courses are the perfect preparation for learners who are looking to pursue a career in the uniformed public services, armed forces or in the civil service.

As part of our protective services courses we'll prepare you for a career in one of the biggest employment sectors in the UK. The College works in partnership with Dyfed Powys Police which allows learners to get a real taste of the front-line. As a protective services learner you will learn all about leadership, teamwork, citizenship and diversity as well as law and the legal system.

The Military Preparation course has excellent links to the RAF, Navy and the Army. Fitness is also a key element of our courses and you'll take part in outdoor activities including climbing, orienteering and hill walking.

FACILITIES

With theory sessions based in our well-equipped classrooms you'll also undertake sessions in the sports hall and fitness suite. Level 3 learners will also take part in a three-day expedition.

As part of your course you'll also benefit from guest speakers, a training day with the Fire Service, and fitness sessions with the Military as well as benefiting from our partnership with Dyfed Powys Police.

The Services Academy

The Academy is aimed at anyone looking to pursue a career with the emergency services or with the military and is open to all College learners. The Academy runs each Wednesday and will help you to build the skills needed for your chosen career.

Courses

Protective Services	Level 3
Protective Services & Sport	Level 2
Military Preparation	Level 1

Future Careers:

Armed Services | Civil Service | Coastguard | Customs & Excise | Emergency Planning | Fire Service | Immigration | Local Government | Paramedic | Police Service | Security

16

Sport



DID YOU KNOW?

Sports learners often progress to the UK's top sports university in Loughborough to undertake degree programmes including the BSc in sports coaching and development.

WHAT CAN YOU EXPECT TO EARN?

£20,000 - £30,000

Salary range of a fitness instructor

£31,000 - £44,000

Salary range of a PE teacher

£25,000 - £30,000

Salary range of a nutritionist

£20,000 - £100,000

Salary range of a sports coach

TURN YOUR PASSION INTO A CAREER

If you are passionate about sport or fitness this is the place for you. There are two courses to choose from at Level 3; Sports Coaching or Sport, Fitness and Personal Training. As part of the courses you will learn the theory of sport and or fitness as well as having plenty of time to practise your chosen sport and develop your coaching skills or fitness knowledge.

As a sports learner you will be part of the College's Sports/Fitness Academies (rugby, football and girls sports) and take part in weekly training and fixtures to improve your skills and build your knowledge.

All of the sports and fitness courses are career focused. Alongside the theory elements you will have the opportunity to undertake practical experiences e.g. coaching students or developing training programmes for clients to help develop your skills. You may also have the opportunity to undertake additional qualifications such as sports leaders, nutrition, Duke of Edinburgh and some coaching awards.

FACILITIES

Enrol on one of our sports courses and you will benefit from a fully equipped cardio gym, a strength and conditioning gym, a sports hall and state-of-the-art classrooms.

You will also be taught by highly experienced lecturers including a former Professional Rugby Player, a former International Athletics Welsh Champion, a UEFA Level 3 Football Coach and WRU Coaches.

Follow us on Twitter: @pembssport

Courses

Sports Coaching / Sport & Fitness (1 yr course)	Level 3
Sports Coaching & Development / Sports Fitness & Personal Training (2 yr course)	Level 3
Sport & Protective Services	Level 2

Future Careers:

Gym Instructor | Nutritionist | Outdoor Adventure Instructor | Performance Analyst | Personal Trainer | PE Teacher | Sports Coach | Sports Conditioning Therapist | Sports Development Officer | Sports Scientist

17

Travel & Tourism



DID YOU KNOW?

The sector is expecting a huge bounce back following the impact of the global pandemic, including the return of more than 100m jobs.

WHAT CAN YOU EXPECT TO EARN?

£26,000 - £40,000

Salary range for a customer service manager

£19,000 - £27,000

Average salary for cabin crew

£22,000 - £33,000

Salary range for a travel agent

£25,000 - £85,000+

Salary range for a hotel manager

LET YOUR CAREER TAKE FLIGHT

Our travel and tourism courses are designed to equip you with the skills and knowledge to progress to further study, or directly into employment, in this rapidly expanding sector.

Whether your dream job is to become a resort representative, tour guide, chalet host, travel agent or to work at a top tourist attraction, our Level 2 and Level 3 programmes will set you on the right track.

With a wealth of opportunities both internationally and locally, the tourism industry is without doubt one of the most exciting industries to be in right now.

FACILITIES

As a College learner you'll benefit from state-of-the art classrooms featuring digital projectors, College-wide WiFi and access to Microsoft Office packages.

Throughout the course you will also benefit from guest speakers covering the breadth of the travel and tourism industry from hotels to tourist attractions, airports, airlines and much more.

You'll also have the opportunity to go on a number of trips and visits to explore the wide variety of tourism destinations available in the UK as well as finding out about the huge number of roles offered by this exciting industry sector.

Courses

Travel & Tourism	Level 3
Travel & Tourism	Level 2

Future Careers:

Adventure Tourism Manager | Air Cabin Crew | Cruise Ship Steward | Entertainment Co-ordinator | Hotel Manager | Resort Manager | Tourism Officer | Travel Agent | Visitor Attraction Manager

18

Life Skills Academy



DID YOU KNOW?

Person-Centered Programmes
These courses are for learners who have a broad range of additional learning needs (ALN) and disabilities. Our programmes are tailored to the individual learners needs, abilities and aspirations. They have the opportunity to develop their vocational skills such as woodwork, horticulture, enterprise, drama, IT, sports, cooking etc.

Support
These courses are aimed at developing independence and confidence whilst still being supported by Learning Support Assistants (LSAs).

Pathways
These courses are designed to help prepare for independent living, further education or supported employment.

Learners have also competed in competitions including the WorldSkills UK Finals in:

- Catering
- Fitness Instruction
- Horticulture
- Media

PREPARING YOU FOR LIFE

The Life Skills Academy offers enriched and varied programmes which have been specifically designed to allow individuals to learn and live more independently. Learners will develop their social skills, engage with their community, improve their health and wellbeing, literacy, numeracy and digital literacy and develop employability skills.

There is a highly inclusive approach to supporting Life Skills Academy learners, which starts while they are in school. Learners are invited to attend a number of transition events including a Link Programme which gives learners a chance to spend up to two days in College, meeting the tutors, other learners and getting to know the College.

FACILITIES

Learners are fully supported throughout their programme by tutors and a team of experienced learning support assistants. The Life Skills Academy boasts bespoke facilities, equipment and resources for learners with a wide range of additional learning needs, learning difficulties and disabilities.

Our programmes and delivery use a person-centred ethos to enable learners to develop transferable skills which will help them prepare for employment opportunities, volunteering and further education, as well as helping to prepare them for independent living.

Courses

Skills for Life	Pre-Entry
Skills for Life Plus	Entry 1
Skills for Employment	Entry 2
Skills for Progress	Entry 2
Preparation for Life	Entry 2/3
Preparation for Further Education.....	Entry 2/3
Preparation for Employment	Entry 2/3
Preparation for Progress	Entry 2/3
Pathway 4	Entry 3/Level 1
Passport to Success	Level 1

Part-time provision is available for those who do not want to commit to a full-time programme.

Opportunities:

Learners have access to specialist equipment, resources and software to aid their learning, as well as a bespoke off-site vocational training centre.

SAY HELLO!



pembrokeshire.ac.uk | 0800 9 776 788 | admissions@pembrokeshire.ac.uk

Disclaimer

The College takes all reasonable steps to provide the educational services and courses as described in this prospectus. Details are correct at the time of going to press but may be subject to change without prior notice.

Courses will not run if learner numbers are insufficient. The College has the right to refuse individuals entry to courses in certain circumstances. Prospective learners may be advised of more suitable alternatives, if appropriate.

